



Haus4one - Relocatable 1 Person Home



Providing a fast effective Passivhaus solution to meet your needs

Our turnkey finished units are fully manufactured offsite, delivered and installed ready for occupation within hours.

- **Passivhaus** standards and the all the benefits of Beattie Passive
- **Fast connections** to main or temporary services
- **Lightweight foundation** requirements
- **Relocatable** without major structural alteration
- Built for **60 year plus life span**
- **Minimal energy demand** (possibly 100% off grid)

	Building Regulations	Beattie Passive
Enhanced Thermal Efficiency – U-Value		
Wall	0.30 W/(m ² K)	≤0.11 W/(m ² K)
Roof	0.20 W/(m ² K)	≤0.11 W/(m ² K)
Ground Floor	0.25 W/(m ² K)	≤0.12 W/(m ² K)
Simple Airtightness detailing		
Airtightness - m ³ /hm ² @50pa	10.0	1 and below
Thermal Bridge free		
Y-Values	0.15 W/mK	-0.039 W/mK
Low sound transmission is 6 times better than Building Regulations		
Sound	45db	57db
High standard fire safety – double building regulations		
Fire protection between dwellings	1 Hour	2 Hour

Beattie Passive innovative system lifts building standards and delivers the following:

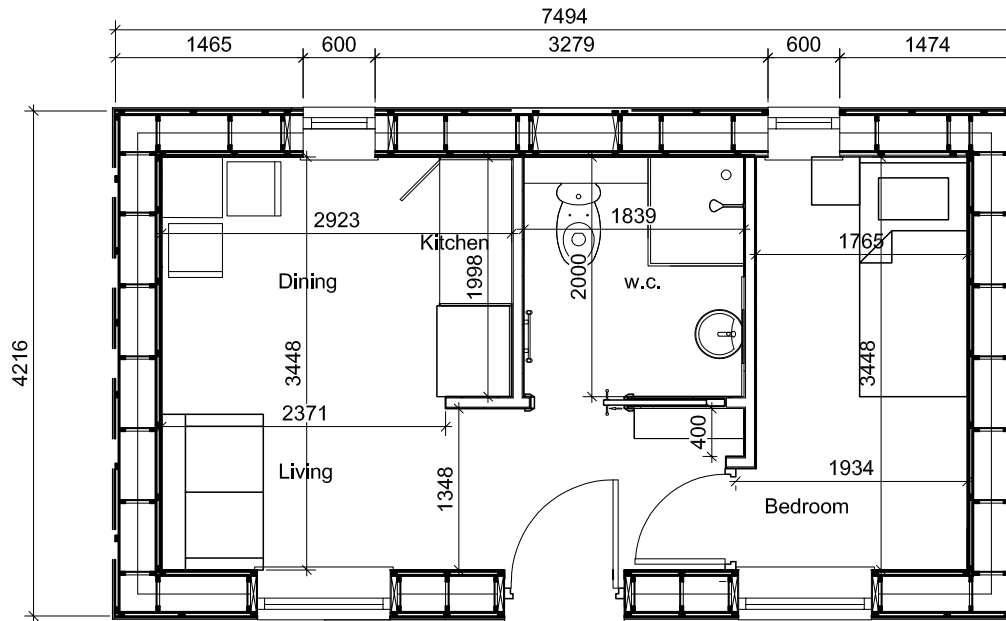
- High performance structural thermal envelope delivering **Passivhaus energy and comfort standards**
- **High quality assured product**, through rigorous testing and certification
- **Full design flexibility** – any design, shape or style
- **Reduced heating requirements** - lifting residents out of fuel poverty
- **Sustainable materials** and low carbon footprint
- **Healthier and comfortable homes**, no drafts or overheating and helps to reduce health issues such as Asthma and Hay fever
- High levels of **sound, fire, flood and radon protection**



We can incorporate a range of external finishes

For more information contact: 08456 449003 | www.beattiepassive.com

Room Layout



GIA: 24m²

What is included

General

- Steniboard external cladding
- High Performance external doors & windows (U-value 0.78 W/(m²K))
- Internal walls and ceilings - plasterboard and painted
- Skirting and architraves
- Internal wooden varnished doors
- Laminate flooring throughout and sheet flooring in shower room

Shower Room

- Electric Shower
- WC
- Sink and tap

Kitchen

- 5 kitchen units with sink and tap
- Laminated board splash back
- Fridge
- Single Oven
- Hob
- Extractor

Electrical

- 7 double electrical sockets plus electric points for appliances
- 6 internal lights points
- 2 external wall PIR lights
- Electrical hot water heater
- Mechanical Ventilation with Heat Recovery

What is not included

- No allowance has been made for fitted and unfitted furniture
- Connection to services
- Foundation / ground works
- Landscaping
- Other associated works
- Passivhaus Low Energy Certification