



# Haus<sup>4</sup> Studio



Illustrative Concept

## Haus4studio is the perfect solution for the UK's immediate housing crisis

Each modular unit contains two self-contained studios which are fully manufactured offsite, delivered and installed ready for occupation within hours.

- Individual units or can be stacked in multiples
- Passivhaus standards and the all the benefits of Beattie Passive
- Fast connections to main or temporary services
- Lightweight foundation requirements
- Relocatable without major structural alteration
- Built for 60 year plus life span
- Minimal energy demand (possibly 100% off grid)

	Building Regulations	Beattie Passive
<b>Enhanced Thermal Efficiency – U-Value</b>		
Wall	0.30 W/(m <sup>2</sup> K)	≤0.11 W/(m <sup>2</sup> K)
Roof	0.20 W/(m <sup>2</sup> K)	≤0.11 W/(m <sup>2</sup> K)
Ground Floor	0.25 W/(m <sup>2</sup> K)	≤0.12 W/(m <sup>2</sup> K)
<b>Simple Airtightness detailing</b>		
Airtightness - m <sup>3</sup> /hm <sup>2</sup> @50pa	10.0	1 and below
<b>Thermal Bridge free</b>		
Y-Values	0.15 W/mK	-0.039 W/mK
<b>Low sound transmission is 6 times better than Building Regulations</b>		
Sound	45db	57db
<b>High standard fire safety – double building regulations</b>		
Fire protection between dwellings	1 Hour	2 Hour

## Beattie Passive's innovative system lifts building standards and delivers the following:

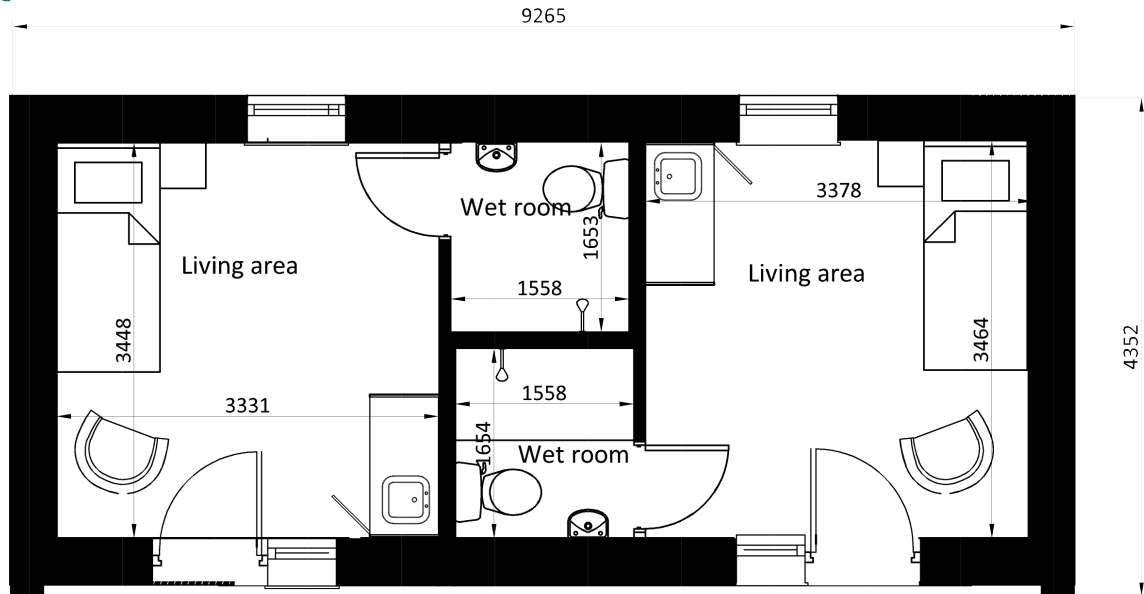
- High performance structural thermal envelope delivering Passivhaus energy and comfort standards
- High quality assured product, through rigorous testing and certification
- Full design flexibility – any design, shape or style
- Reduced heating requirements - lifting residents out of fuel poverty
- Sustainable materials and low carbon footprint
- Healthier and comfortable homes, no drafts or overheating and helps to reduce health issues such as Asthma and Hay fever
- High levels of sound, fire, flood and radon protection



For more information contact: 01953 687332 | [www.beattiepassive.com](http://www.beattiepassive.com)



## Room Layout



Haus4Studio

Scale 1:50

overall GIA: 29.3m<sup>2</sup>

Each Studio GIA: 14.65m<sup>2</sup>

### What is included per studio:

#### General

- Steniboard external cladding
- High Performance external doors & windows (U-value 0.78 W/(m<sup>2</sup>K))
- Internal walls and ceilings - plasterboard and painted
- Skirting and architraves
- Internal wooden varnished doors
- Flooring throughout

#### Shower Room

- Electric Shower
- WC
- Sink and tap

#### Kitchen

- Kitchen units with sink and tap
- Laminated board splash back
- Fridge
- Hob
- Extractor

#### Electrical

- Double electrical sockets plus electric points for appliances
- Internal lights points
- External wall PIR lights
- Electrical hot water heater
- Mechanical Ventilation with Heat Recovery

### What is not included

- No allowance has been made for fitted and unfitted furniture
- Connection to services
- Foundation / ground works
- Landscaping
- Other associated works
- Passivhaus Low Energy Certification

### Optional Extras

- Sprinkler system
- Alternative cladding