



# Haus<sup>4</sup>Three



## Providing a fast effective Passivhaus solution to meet your needs

Our turnkey finished units are fully manufactured offsite, delivered and installed ready for occupation within hours.

- **Passivhaus** standards and the all the benefits of Beattie Passive
- **Fast connections** to main or temporary services
- **Lightweight foundation** requirements
- **Relocatable** without major structural alteration
- **Built for 60 year plus life span**
- **Minimal energy demand** (possibly 100% off grid)

	Building Regulations	Beattie Passive
<b>Enhanced Thermal Efficiency – U-Value</b>		
Wall	0.30 W/(m <sup>2</sup> K)	≤0.11 W/(m <sup>2</sup> K)
Roof	0.20 W/(m <sup>2</sup> K)	≤0.11 W/(m <sup>2</sup> K)
Ground Floor	0.25 W/(m <sup>2</sup> K)	≤0.12 W/(m <sup>2</sup> K)
<b>Simple Airtightness detailing</b>		
Airtightness - m <sup>3</sup> /hm <sup>2</sup> @50pa	10.0	1 and below
<b>Thermal Bridge free</b>		
Y-Values	0.15 W/mK	-0.039 W/mK
<b>Low sound transmission is 6 times better than Building Regulations</b>		
Sound	45db	57db
<b>High standard fire safety – double building regulations</b>		
Fire protection between dwellings	1 Hour	2 Hour

## Beattie Passive innovative system lifts building standards and delivers the following:

- High performance structural thermal envelope delivering **Passivhaus energy and comfort standards**
- **High quality assured product**, through rigorous testing and certification
- **Full design flexibility** – any design, shape or style
- **Reduced heating requirements** - lifting residents out of fuel poverty
- **Sustainable materials** and low carbon footprint
- **Healthier and comfortable homes**, no drafts or overheating and helps to reduce health issues such as Asthma and Hay fever
- High levels of **sound, fire, flood and radon protection**



Image is of Haus4one

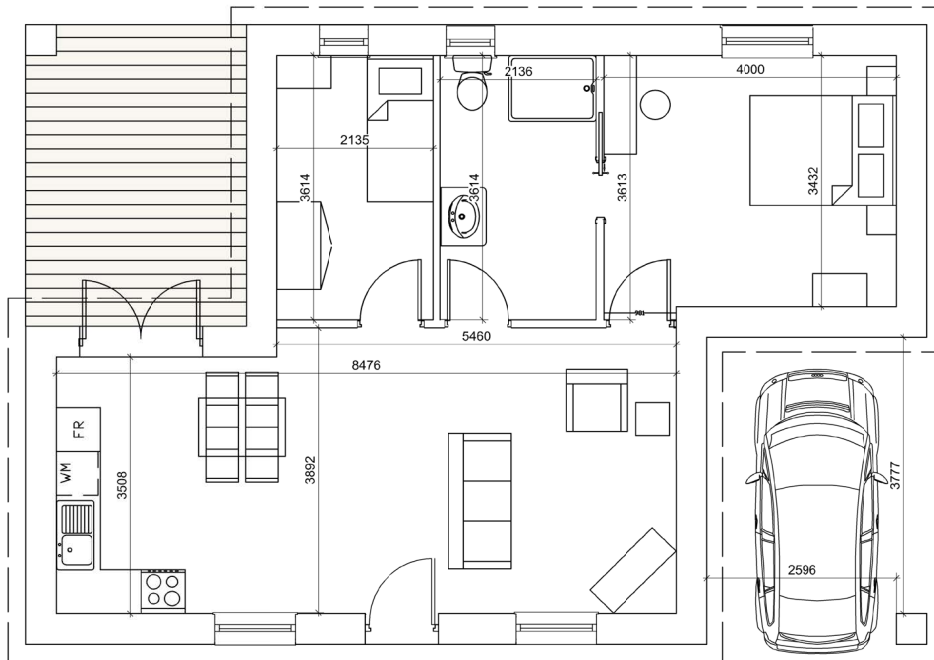
For more information contact: 01953 687332 | [www.beattiepassive.com](http://www.beattiepassive.com)



## Room Layout

GIA: 62.6m<sup>2</sup>

Indicative Layout



### What is included

#### General

- Steniboard external cladding
- High Performance external doors & windows (U-value 0.78 W/(m<sup>2</sup>K))
- Internal walls and ceilings - plasterboard and painted
- Skirting and architraves
- Internal wooden varnished doors
- Flooring throughout

#### Shower Room

- Electric Shower
- WC
- Sink and tap

### What is not included

- No allowance has been made for fitted and unfitted furniture
- Connection to services
- Foundation / ground works
- Landscaping
- Other associated works
- Passivhaus Low Energy Certification
- Car port canopy and decking

#### Kitchen

- 6 kitchen units with sink and tap
- Laminated board splash back
- Fridge/Freezer
- Single Oven
- Hob
- Extractor
- Washing Machine

#### Electrical

- 9 double electrical sockets plus electric points for appliances
- 7 internal lights points
- 4 external wall PIR lights
- Electrical hot water heater
- Mechanical Ventilation with Heat Recovery

### Optional Extras

- Sprinkler system
- Alternative cladding
- Car Port canopy
- Decking